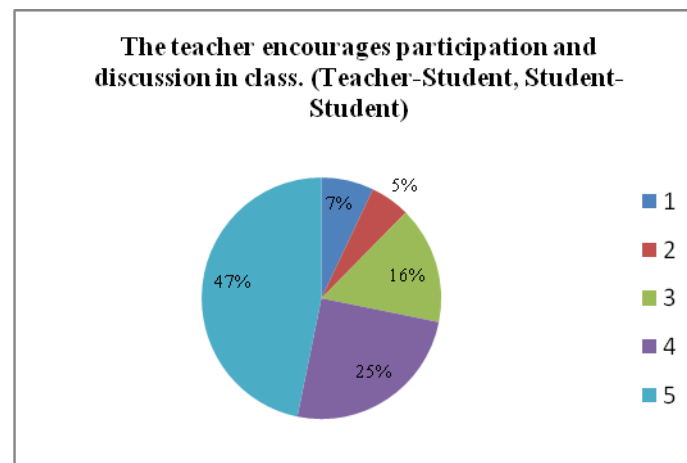
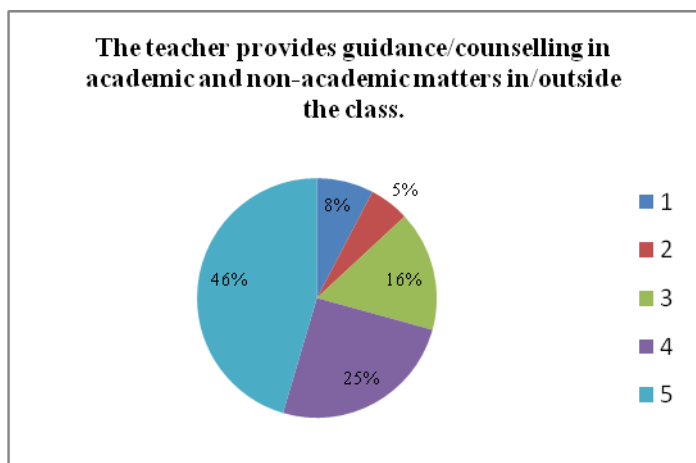
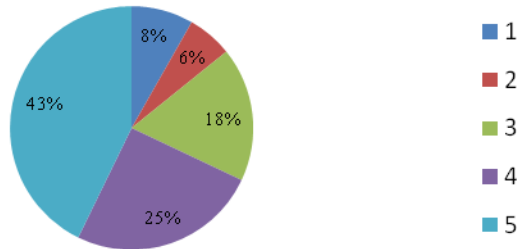


OVERALL FEEDBACK (2018-2019)

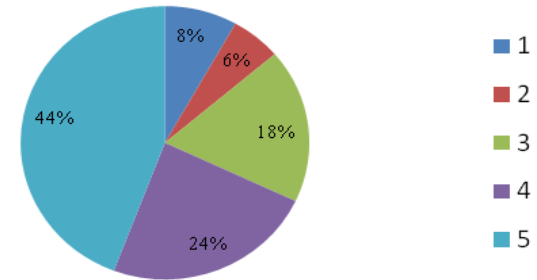
Response/ Questions	The teacher provides guidance/counselling in academic and non-academic matters in/outside the class.	The teacher encourages participation and discussion in class. (Teacher-Student, Student-Student)	The teacher uses modern teaching aids/gadgets, handouts, suggestion of references, ppts, web resources, etc.	The teacher pays attention to academically weaker students as well.	The teacher is regular and punctual in class	The teacher invites opinion and questions on subject matter from students.	The teacher inspires students for ethical conduct .	The teacher links the subject to real life experiences and creates interest in the subject.	The teacher covers the entire syllabus in time.	The teacher explains the topics efficiently .	Periodical assessments are conducted as per schedule.	The teacher uses non-traditional methods of evaluation like quiz, seminars, assignments, classroom presentations/participation (or any other method).
1 - Strongly Disagree	7.68	7.04	8.23	8.13	7.25	6.65	6.44	6.98	7.02	6.59	6.30	7.35
2 - Disagree	5.41	5.35	5.98	5.64	4.78	4.67	4.41	4.27	4.52	5.14	4.42	5.45
3 - Satisfactory	16.19	15.79	17.81	18.25	14.20	14.60	14.61	14.46	14.07	13.85	14.38	14.95
4 - Agree	25.30	25.03	25.21	23.76	23.21	24.79	24.30	24.24	23.26	24.22	24.58	24.68
5 - Strongly Agree	45.42	46.78	42.76	44.23	50.55	49.29	50.23	50.05	51.13	50.20	50.32	47.58
Total	100	100	100	100	100	100	100	100	100	100	100	100



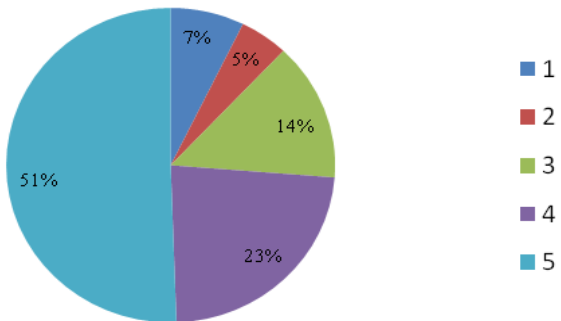
The teacher uses modern teaching aids/gadgets, handouts, suggestion of references, ppts, web resources, etc.



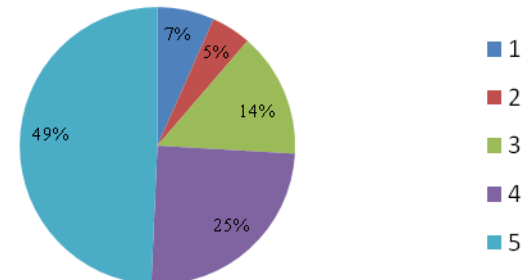
The teacher pays attention to academically weaker students as well.



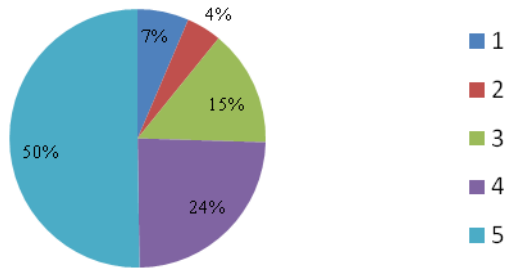
The teacher is regular and punctual in class



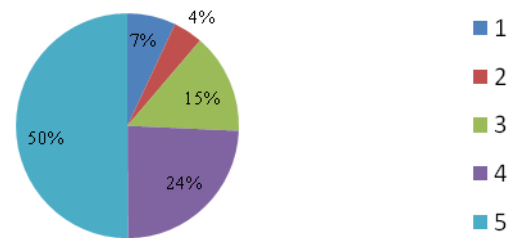
The teacher invites opinion and questions on subject matter from students.



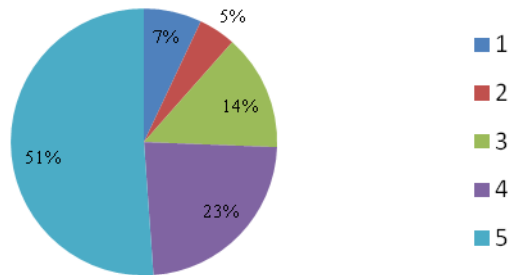
The teacher inspires students for ethical conduct.



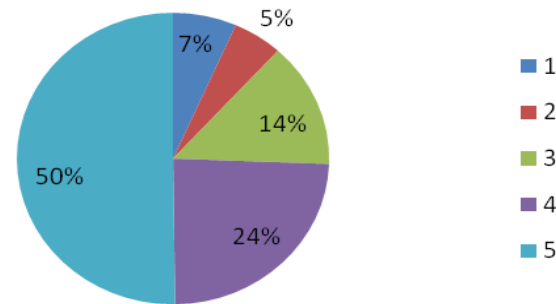
The teacher links the subject to real life experiences and creates interest in the subject.



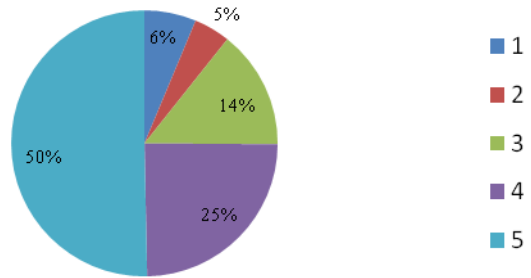
The teacher covers the entire syllabus in time.



The teacher explains the topics efficiently.



Periodical assessments are conducted as per schedule.



The teacher uses non-traditional methods of evaluation like quiz, seminars, assignments, classroom presentations/participation (or any other method).

